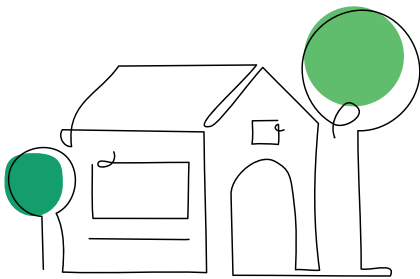


WHO WE ARE

The Bass Coast Community Foundation was established in 2002 to provide a sustainable source of funds for community projects. We are an independent, philanthropic organisation operating exclusively for the benefit of the Bass Coast community. We are for local people in Bass Coast – this is your Foundation!

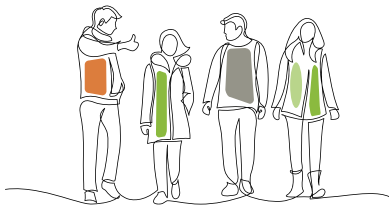
We are advocating for the issues that are most important to local people. By partnering with local organisations, we are working to make our communities stronger, more resilient, and healthy.

REDUCE THE INCIDENCE AND RISK OF HOMELESSNESS AND HOUSING STRESS



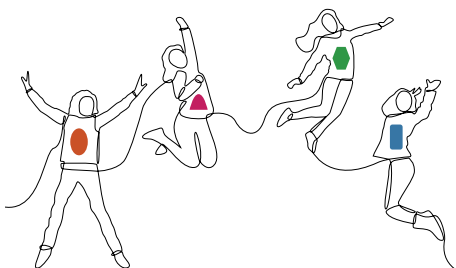
- Housing stress continues to grow in Bass Coast and the groups most affected are single women over 60 and young people.
- The number of lone persons in low-income households in Bass Coast is higher than the Victorian average.
- Even before the pandemic, households experiencing rental stress increased by 11.6%.

INCREASE THE ASPIRATIONS OF YOUNG PEOPLE THROUGH SKILLS, KNOWLEDGE AND LEARNING



- Young people are the future of our community and their participation in every aspect of community life supports their development.
- 13% of 15–24 year old young people living in Bass Coast are not employed or in education.
- 28.7% of 18–24 year old young people are experiencing rental stress.

INCREASE OPPORTUNITIES FOR LOCAL WOMEN AND GIRLS



- Female participation in employment, education and community life delivers positive economic and social outcomes.
- 50% of women in Bass Coast have an individual income of less than \$499 per week compared with 38% of men.
- 1/3 of females in Bass Coast live in households where they are alone or a lone parent with dependent children.



OUR COMMUNITY GIVING 2021-2022

Bass Coast Kids as Catalysts program (Kids Thrive)	Piloted at Newhaven Primary School in 2021, and in 2022 also being delivered at Bass Valley Primary and Powlett River Primary, this award-winning program ignites young people to become catalysts for change in their local communities.	\$63,525
Foundation for Rural and Regional Renewal (FRRR)	A total of 739 Back to School vouchers (supplied by FRRR) were distributed to students in need across all Bass Coast schools, in addition to families in need outside traditional school settings.	\$36,950
YMCA (YES Youth Hub, YMCA Cowes)	YES, Youth Hub received a Community Grant to establish a pantry to support local young people sleeping rough, couch surfing or with limited access to quality food at home. YMCA Cowes received funds to support young people in need to attend school holiday and other sport and recreation opportunities.	\$8,850
Bass Coast College	As part of a generous bequest, this year the Joan Eltringham Memorial Fund was launched to improve well-being, inclusiveness and literacy for disadvantaged and vulnerable children attending Bass Coast College.	\$7,000
Bass Coast Special School	Recipients of a Community Grant to introduce a play-based therapy program for primary and lower secondary aged students with learning difficulties and communication challenges..	\$5,000
Bass Coast TAC L2P program	Long standing support for the L2P program ensuring young learner drivers who do not have access to a supervised driver or car, and who are unable to get the required 120 hours of supervised driving practice, are matched with a volunteer mentor driver and access to a program vehicle.	\$5,000
PICAL	Phillip Island Community and Learning Centre (PICAL) received grant to support ongoing costs of the Food Pantry. This initiative provides weekly food hampers and meals prepared by volunteers, using ingredients from their own Community Garden, and are distributed to residents in need.	\$4,250
Kinship Carers	Funding has supported the establishment of a Kinship Carers group at Phillip Island who meet monthly. Most are dealing with challenging situations daily; primarily with the parents of the children being cared for and the associated support services required.	\$1,500
Swell Mamas	Received a grant to run a beginner surfing program to help women and mothers to learn a new recreation activity, gain self-confidence and build on their social network and connection to their local community.	\$1,200

HOW YOU CAN HELP

DIRECT DONATION

Donations can be made on our website or by scanning this code:



WORKPLACE GIVING

Regular, small payments can be deducted directly from your wage, with support of your employer.

NAMED FUNDS

Individual and corporate donors can establish a Named Fund, targeting an area of interest to them, and leaving a legacy for the benefit of recipients.

BEQUESTS

You can nominate the Bass Coast Community Foundation in your Will, and leave a permanent legacy in the Bass Coast.